



# SCHOOL PROSPECTUS 2026



**Address:** Ysgol Brynteg School Ewenny Road, Bridgend, CF313LE **Telephone:** 01656 815559

**Website:** [www.bryntegschool.co.uk](http://www.bryntegschool.co.uk) [admin@bryntegschool.bridgend.cymru](mailto:admin@bryntegschool.bridgend.cymru)

[Pupilsupport@bryntegschool.bridgend.cymru](mailto:Pupilsupport@bryntegschool.bridgend.cymru)

### **School Social Media Handles:**

**Quick links:** [Linktr.ee](http://Linktr.ee)

**Facebook:** [@BryntegSchoolBridgend](https://www.facebook.com/BryntegSchoolBridgend)

**BlueSky:** [@BryntegSchool.bsky.social](https://bsky.app/profile/BryntegSchool.bsky.social)

**Instagram:** [@BridgendSchoolBridgend](https://www.instagram.com/BridgendSchoolBridgend)

**LinkedIn:** [@BryntegComprehensiveSchool](https://www.linkedin.com/company/BryntegComprehensiveSchool)

### **Useful Contacts**

SLT - Senior Leadership Team

[Ryan Davies Headteacher](#)

[Kath Lewis Deputy Headteacher Adam Rosser](#)

[Assistant Headteacher Rob Wagland](#)

[Assistant Headteacher Laura Connolly](#)

[Assistant Headteacher Edward Rees Assistant Headteacher](#)

### **School Governance:**

Mrs. S Delaney - [Clerk to the Governors](#)

Mrs. R Stephens - Acting Chair of Governors

Mr. D Unwin - Vice-Chair of Governors

Cllr. A Williams - LEA Governor

Miss A Feitor-Jones LEA Governor

Mr. R Leonard - Community Governor

Mrs. C Littlewood - Community Governor

Mr. R Howley – Community Governor

Cllr. I Williams - Community Governor

Mrs K George - Parent Governor

Mr. D Bolton - Parent Governor

Ms. M Howell - Parent Governor

Ms. P Duggan - Parent Governor

Ms. C Pearce - Parent Governor

Mrs. A Davies-Shilling – Parent Governor

Mr. S Vicker- Staff Governor

Mrs. M Bowen-Oaten – Staff Governor

Mrs. K Joseph - Staff Governor

## Safeguarding and Child Protection

Ysgol Brynteg School has as its priority, the protection and wellbeing of all pupils in the school.

**Our Designated Safeguarding Lead (DSL) is: Mrs Carrie Slade** - [carrie.slade@bryntegschool.bridgend.cymru](mailto:carrie.slade@bryntegschool.bridgend.cymru)

### **Our Deputy Safeguarding Leads are:**

**Mr. R Davies** (Headteacher) - [ryan.davies@bryntegschool.bridgend.cymru](mailto:ryan.davies@bryntegschool.bridgend.cymru)

**Mr. E Rees** (Assistant Headteacher) - [edward.rees@bryntegschool.bridgend.cymru](mailto:edward.rees@bryntegschool.bridgend.cymru)

**Mrs. R Stephens** (Acting Chair of Governors - Safeguarding) - [Rea.Stephens@bryntegschool.bridgend.cymru](mailto:Rea.Stephens@bryntegschool.bridgend.cymru)

### **Our Assistant Safeguarding Leads (ASL) are:**

**Mr A Rosser** (Assistant Headteacher) - [adam.rosser@bryntegschool.bridgend.cymru](mailto:adam.rosser@bryntegschool.bridgend.cymru)

**Mr R Wagland** (Assistant Headteacher) - [robert.wagland@bryntegschool.bridgend.cymru](mailto:robert.wagland@bryntegschool.bridgend.cymru)

**Mrs L Connolly** (Assistant Headteacher) - [laura.connolly@bryntegschool.bridgend.cymru](mailto:laura.connolly@bryntegschool.bridgend.cymru)

**Miss A Matthews** - [abigail.matthews@bryntegschool.bridgend.cymru](mailto:abigail.matthews@bryntegschool.bridgend.cymru)

**Ms L Thomas** - [lucy.Thomas@bryntegschool.bridgend.cymru](mailto:lucy.Thomas@bryntegschool.bridgend.cymru)

**Mrs T Kershaw** - [tina.Kershaw@bryntegschool.bridgend.cymru](mailto:tina.Kershaw@bryntegschool.bridgend.cymru)

**Mrs B Parker** - [bethan.Parker@bryntegschool.bridgend.cymru](mailto:bethan.Parker@bryntegschool.bridgend.cymru)

**Ms J Clarke** - [joanne.Clarke@bryntegschool.bridgend.cymru](mailto:joanne.Clarke@bryntegschool.bridgend.cymru)

**School Telephone Number:** (01656) 815559

**Social Services Duty Desk:** 01656 642320 / 642331 until 17:30 hrs.

After 17:30 hrs, you will be re-routed to an emergency number. If all else fails, contact the Police on 101 or 01656 655555 and ask for Duty Desk Bridgend Police.

Our Data Protection Officer is **Mr R Wagland** [robert.wagland@bryntegschool.bridgend.cymru](mailto:robert.wagland@bryntegschool.bridgend.cymru) for information on our policies please visit our website [www.bryntegschool.co.uk](http://www.bryntegschool.co.uk)

## **School Communications:**

### **ParentPay**

Sign up for [ParentPay](#) to pay for school trips, consent for trips and fundraising.

Please email: [Mrs. K Willis-O'Brien](mailto:Mrs.KWillis-O'Brien)

### **ClassCharts**

Pupils and parent/carers will be given a code which will allow them to access [Classcharts](#). There is an app which you can download onto your phone, or you can use your code to access it on a computer/tablet. Teachers will put homework into Classcharts and you will receive a notification when it is there. When pupils make a positive contribution or if pupils do something which means that they are not ready to learn or have not done what we all expect, again this will appear in the app.



### **SeeSaw**

Year 7 and 8 pupils use a system called [SeeSaw](#). Seesaw offers tools, resources, and curriculum with interactive lessons, digital portfolios, and two-way communication features that provide continuous visibility into the student's learning journey to support and celebrate their learning.

### **SIMS Parent app**

You can access the system from a smartphone, tablet or PC by downloading the [SIMS Parent app](#) or visiting: [www.sims-parent.co.uk](http://www.sims-parent.co.uk) What will you find in the SIMS Parent app: school reports and access to update your contact details. Once parental details are in our system we will send you an activation email. Once received please click on the link from your tablet, PC or smartphone to activate your account.

### **Hwb**

Pupils will be given an Hwb email address and password when they join the school. These details will also be used to access Google Classroom. If any pupils have Hwb access issues, please email: [Jen L Davies](mailto:Jen.L.Davies)

Login to Hwb via: <https://hwb.gov.wales/>

For our communication tool troubleshooting guides, visit our website [Communications page](#).



### **Headteacher Welcome**

Welcome to our website which aims to give you a flavour of the provision here at Brynteg School. As the headteacher, I am proud of being able to lead such a wonderful school, a school which has achieved so many things already and I am sure that this will continue.

Providing pupils with learning opportunities which inspire and engage them is something we are all passionate about. The learning needs of pupils are constantly changing, and this means we are continually looking to develop and adapt our provision to ensure that these needs are met. This dynamic approach to learning has ensured that our results have been consistently strong over the years. Lessons are exciting and challenging, bringing out the best in each and every pupil.

Whilst being proud of our excellent performance in examinations, our school is about much more than this and we aim to ensure that all of our pupils access a wide range of enrichment activities both within our timetable provision and in numerous after-school clubs and activities. The energy that this brings to our school really is a strong and powerful feature of our school and is something which visitors often comment upon.

At the core of the success of Brynteg School is a strong and focused pupil support system. Only happy pupils learn, and our provision ensures that this is the case. Pupils know that there is a caring system in place which will meet their needs, provide them with the support they require and allow them to access learning when they are ready.

Thank you for taking the time to read this and please, take up the offer of visiting us to find out why the pupils and staff are so proud of this wonderful school. Please do not hesitate to contact me should you wish to discuss any aspect of our provision further.

Best wishes - **Ryan Davies - Headteacher**

### **School Organisation**

Pastoral teams, curriculum leaders and subject staff all work in collaboration to support pupils to achieve their very best.

### **Learning and Teaching**

The school is divided into clusters, each with its own cluster leader. **Cluster Leaders** are responsible for leading and managing the teaching in their areas of responsibility throughout the school and produce schemes of work for all age groups. They are responsible for:

- standards in the subject and quality assurance
- departmental organisation
- assessment and monitoring
- financial management of the departmental budget
- management of departmental staff
- monitoring the conduct of pupils

### **Pastoral Care, Wellbeing and Achievement**

#### **Ysgol Brynteg School is divided into three pastoral areas:**

Years 7, 8 and 9 is referred to as KS3 (Key Stage 3) Years 10 and 11 is referred to as KS4 (Key Stage 4) Years 12 and 13 (Sixth Form) is referred to as KS5 (Key Stage 5)

Each student has the support of their **Year Leader** and **Pupil Wellbeing Officer**.

#### **Year 7 Leaders:**

Mr L Evans Year Leader - [lloyd.evans@bryntegschool.bridgend.cymru](mailto:lloyd.evans@bryntegschool.bridgend.cymru)

Ms L Thomas Pupil Wellbeing Officer - [lucy.thomas@bryntegschool.bridgend.cymru](mailto:lucy.thomas@bryntegschool.bridgend.cymru)

#### **Year 8 Leaders:**

Mr S Vicker Year Leader - [steven.vicker@bryntegschool.bridgend.cymru](mailto:steven.vicker@bryntegschool.bridgend.cymru)

Mrs T Kershaw Pupil Wellbeing Officer - [tina.kershaw@bryntegschool.bridgend.cymru](mailto:tina.kershaw@bryntegschool.bridgend.cymru)

#### **Year 9 Leaders:**

Miss T Holmes-Dwyer Year Leader - [tia.holmes-dwyer@bryntegschool.bridgend.cymru](mailto:tia.holmes-dwyer@bryntegschool.bridgend.cymru)

Miss A Matthews Pupil Wellbeing Officer - [abigail.matthews@bryntegschool.bridgend.cymru](mailto:abigail.matthews@bryntegschool.bridgend.cymru)

#### **Year 10 Leaders:**

Mrs S Hopkins Year Leader - [suzanne.hopkins@bryntegschool.bridgend.cymru](mailto:suzanne.hopkins@bryntegschool.bridgend.cymru)

Mrs B Parker Pupil Wellbeing Officer - [bethan.parker@bryntegschool.bridgend.cymru](mailto:bethan.parker@bryntegschool.bridgend.cymru)

#### **Year 11 Leaders:**

Mrs S Owen Year Leader - [shelley.owen@bryntegschool.bridgend.cymru](mailto:shelley.owen@bryntegschool.bridgend.cymru)

Mrs R Jenkins Pupil Wellbeing Officer - [Renee.Jenkins@bryntegschool.bridgend.cymru](mailto:Renee.Jenkins@bryntegschool.bridgend.cymru)

#### **Year 12 / 13 (Sixth Form) Leaders:**

Mr A Harris Sixth Form Leader - [alan.harris@bryntegschool.bridgend.cymru](mailto:alan.harris@bryntegschool.bridgend.cymru)

Mrs E Reardon Assistant Year Leader - [elizabeth.reardon@bryntegschool.bridgend.cymru](mailto:elizabeth.reardon@bryntegschool.bridgend.cymru)

Ms J Clarke Sixth Form Pupil Wellbeing Officer - [joanne.clarke@bryntegschool.bridgend.cymru](mailto:joanne.clarke@bryntegschool.bridgend.cymru)

#### **Form Tutors**

All pupils are assigned to a form group led by a Form Tutor. The Form Tutor plays an essential part in addressing issues regarding conduct, uniform, cleanliness, punctuality, and attendance. If necessary, these issues may be passed on to the relevant Year Leader and then to the Headteacher.

## Structure of the school day

### Monday – Thursday

| Time              | Activity              |
|-------------------|-----------------------|
| 8.00 – 8.45am     | Pupils arrive in Site |
| 8.45 – 9.00am     | Check in (Form Time)  |
| 9.00 – 9.05am     | Movement Time         |
| 9.05 – 10.05am    | Lesson 1              |
| 10.05 – 10.10am   | Movement Time         |
| 10.10 – 11.10 am  | Lesson 2              |
| 11.10 – 11.30am   | Break                 |
| 11.30am – 12.30pm | Lesson 3              |
| 12.30 – 12.35     | Movement time         |
| 12.35 – 1.35pm    | Lesson 4              |
| 1.35 – 2.20pm     | Lunch                 |
| 2.20 – 3.20pm     | Lesson 5              |

### Friday

| Time          | Activity              |
|---------------|-----------------------|
| 8.00 – 8.45am | Pupils arrive in Site |
| 8.45-9.00am   | Check in (Form Time)  |
| 9.00 – 9.05am | Movement Time         |
| 9.05 – 10am   | Lesson 1              |
| 10.00am       | Movement Time         |
| 10.05am       | Lesson 2              |
| 11.00am       | Break                 |
| 11.25am       | Lesson 3              |
| 12.20pm       | Movement Time         |
| 12.25am       | Lesson 4              |
| 1.20pm        | Lunch                 |
| 2.00pm        | Lesson 5              |
| 2.55 – 3.20pm | Check out (Form Time) |

### Start and End of the school day

The school gates are closed to vehicular traffic during 8:35 - 9:05am and 3:00 - 3:30pm.

Lockdown is in place during this time for health and safety reasons.

All entrance gates located on Ewenny Road and Heol Gam are open to pupils **before 8:45**.

After this time, the **only access point** for pupil entrance is then via the bus bay entrance on Ewenny Road.

All entrances re-open at 3:20pm for pupils to leave the school site.

All visitors must sign in via the main reception point off the bus bay. Please note that if you are visiting during the lockdown times there is no vehicle movement permitted.

Please check our [Calendar page](#) on our website for up-to-date Inset days and Key dates.

The school is closed to pupils during Inset Days for staff training.

### Term Dates

For up-to-date information on term dates for the Bridgend County, please visit the [BCBC website](#)





# UNIFORM 2026

## 30/01/2026 Announcement:

As we look ahead to **September 2026**, we would like to confirm that we will be moving to **trousers** as the standard option **for all pupils**. This shift is rooted in practicality, equity, and the realities of family life. Trousers are more durable, more weather-proof, and far more cost-effective over the course of a school year. They offer greater flexibility for movement, whether pupils are in the classroom, on the yard, or taking part in practical activities.

Just as importantly, this change supports consistency and fairness. A single, streamlined uniform reduces pressure on families, removes unnecessary distinctions, and ensures every pupil can feel comfortable and confident. It also aligns with our commitment to sustainability, with fewer items needed and longer-lasting wear.

This is a positive step forward for Brynteg, simpler for parents and carers, more practical for pupils, and fully in keeping with the inclusive values we stand for.

### Acceptable Trousers:

Plain black trousers

Trousers which are suitable for formal school wear



### Unacceptable Trousers

Trousers with logos, branding or decorative features

Lycra or jegging style trousers

Leggings

Jogging bottoms or tracksuit bottoms (sports style trousers)

Cargo trousers

Denim/PVC/leather

Skinny fit trousers



Hopefully, this gives you as much notice as possible when planning uniform for **September 2026**.

**Our intention is to move to black trousers for all pupils** but understand that some will continue to wear grey trousers in the meantime pending the purchase of new uniform in the future.

Pupils in Year 7 - 13 are expected to wear school uniform (see uniform lists). Parents should ensure that all articles of clothing are clearly labelled with the child's name. Uniform is an important part of our school for all of our pupils. Pupils in years 7-11 can wear a navy school jumper (**with or without** official school logo) and **black trousers**, phasing out grey trousers (see above for explanation) whilst the sixth form uniform is black. Correct and full school uniform should be worn on the journeys both to and from school. Financial assistance towards uniform costs is available in certain cases of low income and so on. More information is available by contacting Louise Evans in the school office.

## **Uniform List**

- *Trousers – plain black – full length (to the shoe). Phasing out dark grey trousers and skirts. No denim/jean type material or leggings are permitted.*
- *Shirt – plain white*
- *Jumper – navy v-neck (with or without the school badge)*
- *School tie*
- *Shoes – plain black – leather/leather effect (please note that black leather trainers are allowed as long as they are plain black). Please see the images below for examples of suitable shoes.*
- *A coat with a hood (any colour); there is lots of walking at Brynteg! ‘Hoodies’ are not acceptable as an outside coat and should not be worn.*
- *Dark socks are required.*

### **Some images of acceptable school shoes:**



### **Some useful links demonstrating acceptable trousers for September 2026:**

[H&M](#)

[Amazon](#)

[George at Asda](#)

[Shein](#)

### **Further Considerations for Uniform:**

*Pupils are permitted to wear a watch and a pair of stud earrings. Wearing a plaster over a piercing or a retainer is not acceptable and refusal to remove unacceptable piercings may result in an exclusions from the normal timetable or pupils being sent home.*

*Excessive make-up will not be allowed at school. Pupils wearing too much make-up will be asked to remove it. This includes acrylic nails although nail varnish may be worn. Refusal to comply may lead to exclusion from the normal timetable. Every pupil is expected to take pride in their appearance and to uphold the good name of the school. This includes hairstyles, which should avoid extremes of fashion in terms of style, cut, and colour.*

## **Sport Kit List**

### **Top Half:**

**Royal Blue Brynteg T-Shirt** (compulsory) – Pupils have the option of wearing either a more fitted V-neck version or a baggier fit round neck t-shirt.

**Royal Blue Brynteg Hoody** (optional but highly recommended) – Pupils may wish to purchase this to wear as an outer layer in colder temperatures. However, it is advised that pupils who wish to represent the school purchase a hoody to wear to and from fixtures (no other hoodies will be permitted).

**Long Sleeve Top** (optional) – In cold weather, when pupils are outdoors, they may wish to wear an additional long sleeve top underneath their t-shirts. This must be either royal blue or black.

**Reversible Games Jersey** – Pupils who will be taking part in rugby involving tackling during lesson time or choose to attend the school rugby extra-curricular club will need a reversible jersey. This can also be worn in lesson time instead of a hoody in cold weather for other activities.

### **Bottom Half:**

**Black Bottoms** (compulsory) – Pupils can choose between tracksuit bottoms, leggings, shorts or a skort, however, they must be plain black. Shorts and skorts must be an appropriate length and at least midway down the thigh. Inappropriate length skorts and shorts are not permitted and shorts must be loose fitting. Tight cycling shorts (for example, Nike pro's) are not allowed. In colder weather, pupils may choose to wear leggings under shorts or skorts if they do not wish to wear jogging bottoms. N.B. For gymnastics pupils can only wear leggings or appropriate length shorts.

**Games Socks / White Socks** (compulsory) – Socks should be the royal blue games socks for team games and plain white socks for other activities. This must be a different pair of socks to pupil's school uniform (these should be grey in colour and therefore it should be easily distinguishable between pupils PE and school uniform socks).

**Sports Trainers** (compulsory) – Pupils must wear sports trainers which are suitable for physical activity providing the necessary grip and ankle support to minimise the risk of injury. Fashion trainers, such as the Nike Air Force 1's, Converse shoes and shoes similar to this would be deemed unsuitable for Physical Education and a health and safety risk. Trainers can be any colour.

**Boots** – Boots will be required for pupils taking part in rugby and football during Physical Education lessons on the field, or for pupils who choose to attend the extra-curricular football or rugby clubs. Boots can be any colour. If you are unsure if your child needs boots, please contact your child's Physical Education teacher. Please note, we also have a number of pairs of boots in school that pupils can borrow.

### **Further Considerations for Physical Education Kit:**

All jewellery must be removed for lessons and hair must be tied back for physical education lessons.

It is recommended that all pupils bring a separate carrier bag to put their trainers/boots into at the end of the lesson, should the playing area be wet.

If pupils need to be excused from taking a full role in a lesson due to illness or injury, they need to provide their teacher with a letter from parents/carers at the start of the lesson. These pupils are still required to bring in their kit and change into this for the lesson. Pupils will still be incorporated into the lesson by taking part with restricted movement (as long as this will not further impact their illness/injury) or by adopting an alternative role, such as a coach, timekeeper or official in the lesson. If pupils do not bring their PE kit it is the Physical Education policy for pupils to borrow kit and still take part in the lesson. Along with this, the school's behaviour policy will be adopted.

If any pupils are not able to meet the Physical Education kit policy, please can parents/carers speak directly to their son/daughter's Physical Education teacher or Year Leader so that we can provide the necessary support to rectify the issue. Should you have any questions regarding Physical Education kit or if you would like to check if an item is suitable for lessons (prior to purchasing), please feel free to email Miss Welsford via:

[Abigail.Welsford@bryntegschool.bridgend.cymru](mailto:Abigail.Welsford@bryntegschool.bridgend.cymru)

## Uniform Suppliers

**Euroschools** - [www.euroschools.co.uk](http://www.euroschools.co.uk) Penybont Court, Ogmores Terrace, Bridgend, CF31 1SU

**Uniforms 2 Go** - [www.uniform2go.co.uk](http://www.uniform2go.co.uk) Unit 4 New Street, Bridgend Industrial Estate, CF31 3UD



We have a free pre-loved uniform service called 'Vinteg'. Please scan the QR code to order, although not guaranteed, we will try our best to source pre-loved items of uniform. We are also happy to accept uniform donations; these items will go on to help those who are struggling to source uniform.

## Stationery and equipment

What you need

Pens - black, blue and red

Simple geometry set - compass, ruler, eraser, set square, protractor

Notebook

Calculator

Bag - most pupils bring a rucksack as this is easier when walking around school. The rucksack needs to be substantial enough to be able to hold books, stationery, P.E kit and so on



## Water in School

Pupils are permitted to bring water to school in plastic bottles and, with permission, to have a drink in lessons.

## General Information and School Rules

Our school community needs structure in order to protect people and property and to ensure an efficient organisation. Parents are asked to make sure that their children are aware of these rules and procedures and also to support the school in their enforcement.

## Personal Property

Valuable property should not be brought into school. Any personal property; including uniform, coats and bags should all be labelled. If your child has lost any item in school, please ask them to direct themselves to the pupil reception, where staff will do their best to locate and return their belongings.



**Secure**  
LOCKER.RENTALS

2 SIMPLE WAYS TO RENT YOUR LOCKER.

1 Visit [www.locker.rentals](http://www.locker.rentals)

2 Scan this QR Code

Once on the web app do the following:

- Enter your LOCATION
- Choose your PREFERRED LOCKER AREA from the drop down menu (if available)
- Click on CHECK AVAILABILITY
- Where prompted enter your details and read and agree to the terms and conditions
- Click on RENT LOCKER and follow the instructions for entering your payment details
- You will then be emailed a locker code and the number of your locker compartment

How to Access your Locker:

- Go to the locker number details on your confirmation email
- Enter the 4 digit code detailed on your confirmation email and open the lock
- Should you forget your code it can be reset by visiting [www.locker.rentals](http://www.locker.rentals) and clicking on the re-issue my locker code link.

## Lockers

Our lockers are provided for belongings, these can be rented annually by contacting [www.locker.rentals](http://www.locker.rentals) or by simply visiting their website, select Brynteg from the first page and then choose your locker. There is an annual fee paid directly to the company for the use of the locker.

## **General Information and School Rules**

*Our school community needs structure to protect people and property and to ensure efficient organisation. Parents are asked to make sure that their children are aware of these rules and procedures and to support the school in their enforcement.*

## **Use of Mobile Phones**

*Please read our mobile phone policy on our [website](#)*

## **Emergency Contacts**

*It is essential that the school has the current details of an emergency contact for every pupil. Please make certain that this information is provided and kept up to date if, for example, mobile phone numbers or email addresses are changed.*

## **Appearance and Behaviour**

*It is expected that pupils' behaviour when travelling to and from school, should always be of a high standard. Conduct that brings the school into disrepute may lead to serious consequences including, in very serious cases, exclusion. Pupils are not allowed to invite friends or visitors onto the school site without special permission from the Leadership Team.*

## **Detention**

*Pupils are given 24 hours notice of an after-school detention via ClassChart announcements and pupils should also inform their parents that they will be late from school on the day the detention has been set.*

## **Punctuality**

*Pupils should be inside the school gates by 8.35am and are registered at 8.45am. School sessions end at 3.20pm and pupils are expected to leave the premises, unless they are taking part in school activities. All pupils will be supervised whilst on the premises and within the times stated.*

## **Absence**

*Attendance at school is a legal requirement up to the age of sixteen. Permission for absence for any reason other than illness must be obtained from the Heads of School. Unauthorised absence is investigated by the school Attendance Officer, Year Leaders and in some cases by the Education Welfare Officer.*

*In the event of an absence from school, parents/carers will be notified by Classcharts message, text or telephone, unless a message explaining the absence is received by the school by 9am. Parents and carers are able to notify the school regarding their child's absence daily **via ClassCharts**, or by telephoning the school on 01656 815697 / 815559. Should a child need to leave the school site for any reason, through the school day, a letter of explanation or a telephone message is required from parents/guardians. If you need to [apply](#) for a leave of absence during term time, please contact the school with the details and visit our website for the leave of absence form (parent/carer tab). Please note that any leave of absence will result in a reduced percentage of attendance for the pupil concerned. Forms are processed near to the dates requested.*



At Ysgol Brynteg School, we have high ambitions for all students and want them to achieve success and realise their full potential. Maintaining excellent attendance and punctuality plays a pivotal role in attaining these goals. Regular attendance is imperative, not only due to legal obligations but also because it is the best way of ensuring that children get the most out of school. Please ensure that your child attends every day and is on time.

### **Truancy**

Class teachers will issue a truancy alert when pupils are more than 10 minutes late to a lesson having previously been in. Short term absence for truancy will also be dealt with by the Year Leader by issuing a B4 or 5 depending on the length of truancy. Longer term truancy will be referred to the Education Welfare Officer where further action will be taken.

### **Medical Facilities, Illness or Injury**

Our Pupil Health and Wellbeing Officer [Ms. J Jones](#) and a number of first aiders are on hand to support our pupils with any illness or injury. The school also benefits from the services of a School Health Nurse who is on site at Ysgol Brynteg School at certain times during the week. The Pupil Health and Wellbeing Officer also liaises with school staff on issues related to general medical conditions, child protection, health promotion and NHS Child Health vaccination programmes.

Parents of all pupils are asked to provide information on a school [contact and consent form](#). You can include any medical condition, past or present. Prescribed medication may be stored in the First Aid room; however, it must be administered by the pupil, under the supervision of the Pupil Health and Wellbeing Officer. If a pupil is ill or injured, they should report to a member of staff so that they can be assessed by a first aider. If the pupil needs to go home, then a parent/carer will be contacted and asked to collect them.

### **Medical Appointments**

Parents should inform the school about appointments in good time, and every effort should be made for these to take place outside school hours or during school holiday periods. If for any reason the pupil needs to leave the school site, e.g. dentist or doctor's appointment, they must report to the pupil reception with an appointment card or letter from home or a parent can communicate through ClassCharts. They will then be signed out. The school is not permitted to let any pupil go home without such an arrangement. Upon their return to school, pupils should report to the pupil reception to sign back in. This procedure is vital for pupil safety and in the event of an emergency.

### **Counselling Service**

As part of a whole school approach to support emotional health and well-being, pupils have access to on-site counselling services from Monday - Thursday. Additionally, every Wednesday morning, a nurse from Public Health Wales is available on-site to provide confidential wellbeing support for our students.

### **Lunchtime Arrangements**

School meals are provided in the school canteen, alternatively pupils may bring in their own packed lunch to eat. Parents in doubt about the eligibility of their children for free meals should seek advice from Pupil Services on 01656 642622. The daily allocation for free school meals is £2.80; these accounts are topped up automatically daily. If it is not used, the credit does not accrue. If your child would like to purchase additional food (including free

school meal pupils) then please ensure that the account is topped up online via the [BCBC pay it](#) website. If you wish for your child's cashless catering account to be capped, to stop any overspend, then please telephone the school: 01656 815559.



All pupils will be given a unique cashless catering number when they start school in September, this number is not the same as the one used in primary schools. You will need this number to top up the cashless account online through the [Cashless Biometric Catering system](#). This system reduces queues at lunchtime and provides anonymity to those eligible for free school meals and allows dinner money to be prepaid. Cash is not accepted for school dinners. Should you require a cashless balance update, please telephone the school on 01656 815559 and we will be able to help you with this.



There is a LLC canteen and the Humanities coffeeshop and canteen. Both are open from 8:15am to serve breakfast and then at morning break and lunchtime. The food/drinks on offer include:



**The salad bar:** This area serves fresh, healthy food like salad, pasta, sandwiches, hot or cold baguettes, tortilla wraps, jacket potatoes, fresh fruit and yoghurt, which are prepared daily.

**Lite bites:** This area has quick, hot, nutritious food. There are hot and cold filled baguettes, paninis, rolls, pizza, bagels, jacket potatoes, fresh fruit and yoghurt. It's perfect for students attending lunchtime lessons or clubs.



**Main meals:** The menu changes every three weeks and includes a vegetarian option. There are traditional roast days with Yorkshire puddings in rich gravy, as well as international dishes like chicken tikka. The main meal is served with pasta, rice or a choice of potatoes and seasonal vegetables. Chips are only available on Fridays.

Information regarding [allergies and special diets](#) can be found on the BCBC website along with information on [menus](#).

Pupils in years 7 - 11 are to remain at school during the lunch break. Pupils in years 12 - 13 are permitted to leave the school site for their lunch. Pupils are expected to return in good time for their last lesson of the school day. Please also note that once pupils are outside the school gates, the school accepts no responsibility for their safety - they leave the premises entirely at their own risk.

### **The HRC LRC - Learning Resource Centres**

The Humanities and Languages Learning Resource Centres are open every day and during break and lunchtime.

### **Maths On-line Learning & Resources**

Mathswatch and Sumdog are on-line resources available for Ysgol Brynteg School pupils to access in order to revise. Details about how to access these resources are provided by the Maths Department. Please contact [Mrs. Kinsey](#) if you require further information on these online resources.

### **Literacy**

Pupils in year 7 and 8 utilise the online resource [MyOn](#). This learning tool opens up a wide-reaching online library, and the availability of e-books to suit their ability.

### **Welsh**

The Welsh department's passion and drive is all geared to equip your child with the ability to communicate in Welsh, with confidence. In years 7-9, we deliver a wide variety of workshops linked to the core text. During these sessions' pupils will develop their communication skills and their use of language (e.g. give information, express opinions, use third person, explore different tenses and idiomatic language) to discuss a range of relevant themes.



The RICH tasks allow pupils to demonstrate their learning in a variety of purposeful ways such as writing an email to IAW magazine, debating relevant topics, making video reels about a friend, creating promotional material linked to helping the environment and keeping fit and healthy.

At GCSE, the context for learning the language is organised under three broad themes: Employment, Wales and the world and Youth. Pupils will continue to develop their understanding and skills in order to communicate and interact confidently, in a variety of scenarios. In addition, preparation for the exam units is done by completing a wide range of exam style questions and improving their understanding of the mark schemes.

We are committed to maintaining a whole school Welsh ethos to reflect the fact that the Welsh language is an integral part of our national identity. We have termly '[Cryw Cymraeg](#)' newsletters updating the school community on news based around the use of the Welsh language in school.

Rydym ni yn Ysgol Brynteg yn ymrwymo i gynnal ethos Gymraeg a Chymreig ysgol gyfan sy'n adlewyrchu'r ffaith bod yr iaith Gymraeg yn rhan annatod o'n hunaniaeth genedlaethol.

We believe that our policy for Welsh language development helps pupils and staff alike to:

- understand and celebrate the distinctive quality of living and learning in Wales in the twenty-first century;
- develop use of the Welsh language inside and outside of the classroom;
- identify and share our sense of Welshness and Welsh Culture;
- feel a heightened sense of belonging to our local community and country

To experience the Welsh language, in all its aspects, is to provide an invaluable opportunity to enrich the educational experience for all pupils at Brynteg School. It also provides pupils with a knowledge of Welsh heritage and history, language and culture, an appreciation of contemporary Wales and its place as a bilingual nation in a European and global context.

We have successfully obtained the Starter Iaith [Arian](#) and [Bronze](#) Awards, and we have been working with Central South Consortium to develop the use of Welsh language across the school. Staff and pupils are committed to developing their Welsh language skills to ensure that the language is a natural part of day-to-day school life.

### **Homework**

At Ysgol Brynteg School, homework is used where appropriate to extend learning opportunities beyond the classroom. Work undertaken outside school is an important part of a pupil's learning journey and the responsibility for completing tasks belongs with pupils. The work a student is asked to complete outside of school is carefully selected to sustain interest, promote good learning habits and to extend a pupil's knowledge and understanding. Students are encouraged to discuss their work with parents, carers and guardians to keep the channels of communication open to assist with home-school learning.

There will be an announcement sent out via Classcharts notifying parents/carers of the task set. The work/resources will be placed on Google Classroom, and this is where pupils will submit their work. Pupils can access their Google Classroom by logging in using their Hwb email account. If any pupil has Hwb email access issues, they can email [Mrs J Davies](#) who will be able to help.

In addition, year 7 and 8 use Seesaw. Seesaw is a platform for pupil engagement and pupils are given the responsibility to upload work independently. Teachers can empower students to create, reflect, share and collaborate and pupils can show what they know, by evidencing their work whether that be with photographs, videos, drawings, text, pdf and links. It is a wonderful tool for our pupils to collaborate and share with their parents/carers.

### **Personal Property**

Valuable property should not be brought into school. Any personal property; including uniform, coats and bags should be labelled. If your child has lost any item in school, please ask them to direct themselves to the pupil hub, where staff will do their best to locate and return their belongings.

Please read our policy regarding the use of [mobile phones](#) on school site.

### **No Pupil Planners**

Ysgol Brynteg School do not use pupil planners. Our main method of communication is through ClassCharts. This offers a vital means of communication between pupils-teachers and teachers- parent/carers.

### **Toilets**

Toilet facilities are available at various locations across the school site including those with disabled access (located in the Wellbeing block).

### **Fire Precautions**

Pupils are expected to obey all regulations currently in practice in the school. Fire drills take place at regular intervals. Deliberate misuse of the fire alarm will be treated as a very serious act and may result in exclusion.

| <b>Fire Assembly Points</b>                    |  |
|--|--|
| <b>Classroom/Office Location</b>               | <b>Fire Assembly Location</b>  |
| <b>Sixth Form Centre</b>                       | Corner of the Humanities block adjacent to the Pavilion                        |
| <b>Reception &amp; Wellbeing Centre</b>        | Back of the Reception & Wellbeing Centre opposite the pupil access doors.      |
| <b>Humanities</b>                              | Adjacent to the front of the building opposite the foyer sliding access doors. |
| <b>Maths Block</b>                             | Opposite the maths block access doors.   |
| <b>Science Block</b>                           | Red Gra area   |
| <b>Health &amp; Wellbeing</b>                  | Adjacent to LLC Sports pitch   |
| <b>Languages, Literacy &amp; Communication</b> | Adjacent to LLC Sports pitch   |
| <b>Expressive Arts</b>                         | Adjacent to LLC Sports pitch   |

# YSGOL BRYNTEG SCHOOL

**Respect - Independence - Community - Kindness**

### **Our Values: Respect - Independence - Community - Kindness**

Our core values encompass respect, independence, community, and kindness. We expect our school community to align with and embody these values. The vast majority of our learners will be recognised daily for adhering to our values (see rewards below) and it is important to note the aim of our behaviour for learning policy is to promote and model the behaviours we value in our school community. Where behaviour does not match our values, we operate a consequence response (see below).

At Brynteg, we feel that most negative behaviours can be prevented should pupils be aware of what is expected of them in terms of behaviour, balanced with a clear system of rewards for those who go 'above and beyond' and demonstrate they are positive role models as leaders.

Praise and assertive behaviour strategies underpin the approaches we use at Brynteg. 'Teggies' will be seen using the Classcharts app by parents and carers as a record of the positive impact of pupils throughout the day.

Pupils need clear guidance as to expectations inside and outside the classroom throughout the day. All classrooms will clearly display the '**Values in action poster**' which promotes the behaviours pupils should display in relation to our values and our **keystone model** which outlines the types of behaviour that are not acceptable and the corresponding sanction / reflection.



YSGOL  
BRYNTEG  
SCHOOL

# VALUES

## RESPECTFUL

### Pupil Respect in Action...

- ★ Respect and follow teacher instructions the first time, every time. Teachers are there to support everyone's learning.
- ★ Be open-minded and respectful of all subjects, because each has value.
- ★ Make respectful contributions to lessons by putting your hand up and not talking over others.
- ★ Showing respect to the school and its property, buildings and equipment. Returning any borrowed materials in the same condition they were given to you, cleaning up after lessons, picking up and disposing of litter if you see it.
- ★ Showing respect to all members of the school community.
- ★ Wear school uniform correctly, so that everyone feels equal.
- ★ Respect others' individuality, differences and beliefs.
- ★ Choose respectful words and language in school, whether in class or during breaks and lunchtimes.

★ BE BRAVE ENOUGH TO SHOW RESPECT, EVEN WHEN OTHERS AREN'T! ★

## INDEPENDENT

### Pupil Independence in Action...

- ★ Use your knowledge and skills to make a good attempt at a task, before asking for help.
- ★ Make sure you always have the right equipment for the lesson, eg. a pen, pencil, appropriate PE kit.
- ★ Use your books and reference materials to solve problems independently.
- ★ Work through a problem or task even when it's difficult. If at first you don't succeed, try and try again.
- ★ Don't be afraid to make mistakes. Mistakes are just new opportunities to learn.
- ★ Be creative by coming up with unique or unexpected solutions.
- ★ Be brave, be independent. Don't follow others when they are making wrong choices.
- ★ Manage your time well, meet your deadlines and do homework on time.

★ BE BRAVE ENOUGH TO BE INDEPENDENT, EVEN WHEN YOU FEEL LIKE GIVING UP! ★

## COMMUNITY MINDED

### Pupil Community-Mindedness in Action

- ★ Listen to each other and your teacher.
- ★ Show respect to our wider community - support staff, canteen staff, cleaning staff, local residents - everybody.
- ★ Involve yourself in community activities, such as musical productions, sporting events etc.
- ★ React positively to an event in the community, such as guest speakers, or when on trips etc.
- ★ Ensure all feel part of the community, such as when a new pupil joins your class/form.
- ★ Follow teacher guidelines when carrying out pair or group work.
- ★ Include everyone and respect differences.
- ★ Show good relationships with team mates and opposing teams.
- ★ Share materials and resources in class.
- ★ Help keep the school, canteen and classroom tidy, even if the litter/mess isn't your own.

★ BE BRAVE ENOUGH TO BE COMMUNITY-MINDED, EVEN WHEN YOU FEEL LEFT-OUT! ★

## KIND

### Pupil Kindness in Action...

- ★ Make kind gestures which impact positively on others, such as encouraging others to attempt a challenging task.
- ★ Be kind and thoughtful in your approach to everyone, such as when involved in pair and group work.
- ★ Be thoughtful of others' feelings when providing peer feedback by making it kind and constructive. We want everyone to learn and improve.
- ★ If you see someone being unkind towards another pupil, be brave and report it. We want everyone to have a positive experience in school.
- ★ Be kind to yourself by making good, healthy choices for your physical, mental and emotional wellbeing. Support and encourage others to do the same.

★ BE BRAVE ENOUGH TO BE KIND, EVEN WHEN IT'S CHALLENGING! ★



GET UP TO 4 POSITIVE TEGGIES EVERY LESSON FOR FOLLOWING THE SCHOOL VALUES!  
TEGGIES CAN BE EXCHANGED FOR REWARDS!



### Expectations

Any behaviour from a pupil which is deemed to be unsociable and below the standard expected from our pupils will lead to appropriate sanctions and in serious cases temporary or permanent exclusion.

Pupils are expected to follow any other rules introduced by the school for their safety and welfare and for the greater good of the school community.

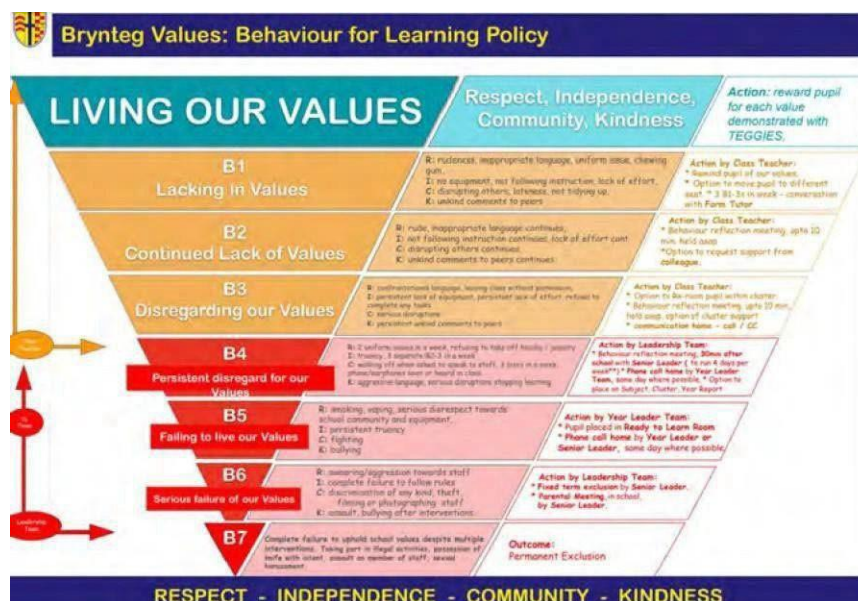
It is expected that pupils attend school with the correct equipment, books and devices necessary for lessons, and to arrive promptly. The school requires pupils to make every effort to complete homework to the best of their ability and attend all classes. It is expected that pupils are polite, courteous and are adept at listening, following instructions and showing respect to staff and other pupils at all times. It is expected that the school environment and the school property is treated with respect and that no pupil causes any malicious damage.

### Dangerous substances

Bryn Teg School will operate a zero-tolerance policy to all non-authorized drugs/medication. Please refer to the school's Drugs Policy. Cigarettes, e-cigarettes, energy drinks, alcohol, illegal drugs and other substances that could be deemed potentially harmful are not permitted on the school site. If found, they will be confiscated and returned to parents/carers or given to the police as appropriate. For items that can be returned, parents/carers will be contacted to collect them, these items will not be returned to the pupil. The school will apply appropriate sanctions, and the police may be informed of any criminal activities.

We are often asked to produce a list of items which are not permitted at Brynteg School and the list below is an attempt to address this. However, it must be noted that this list is not exhaustive and does require an element of common sense and flexibility.

- Energy drinks including Whey protein supplement
- Canned or bottled fizzy drinks
- Aerosols of any kind
- Chewing Gum
- Laser pens
- Alcohol
- Tobacco or cigarettes, smoking paraphernalia of any kind, including vape/e-cigarettes
- Drugs (including paraphernalia) of any kind
- Psychoactive substances (formerly legal highs)
- Anything that could be used as a weapon



## Consequences

### Responses to Inappropriate Behaviour- Keystone model Behaviour reflections / sanctions B1-7

**B1-3 - 10-minute reflection talk** - The classroom teacher will deal with behavioural issues outlined at B1-3 level, where pupils are not demonstrating the school values and interrupting the learning of others. A B2 will require a reflection talk of up to 10 minutes with the teacher to be held as soon as possible. At B3 there will also be communication with parents / carers via a call or Class Charts. Form Tutors should speak to members of their form who receive 3 B2/3s in a week. They will be alerted to this via Class Charts.

**B4 – 30 minute after school reflection (ASR) led by a member of the leadership team** - B4 represents a one hour after school reflection - parents / carers will be given at least 24 hours notice. This will be the consequence of pupils persistently disregarding our values such as picking up 3 B2/3s in a week, 3 lates in a week or 2 uniform issues in a week. If there are genuine reasons for pupils not having the correct uniform or being late, we would ask parents and carers to provide a note to the form tutor. Teachers will also make allowances where pupils have genuine reasons for being late such as school transport arriving late or a previous lesson has overrun. A B4 may also be given to a pupil for aggressive language, walking off when being spoken to or refusing to remove jewellery or hoodies etc.

**Escalation for non-attendance** - If pupils do not attend ASR, it will be escalated the following day to lesson 5 in the ready to learn room and 30 minutes after school. Non-attendance to this will result in a day in the ready to learn room and 30 minutes after school.

**Mobile devices - A B4** will also result from any mobile device being out in class. Phones cannot be used on school site. If pupils are caught with their phone out in class, the phone will be confiscated and kept in a safe until the end of the day when a pupil can collect their phone. A second offence in a half term will result in the parents / carers being requested to pick up the phone from the main reception.

**B5 - Ready to learn room (inclusion)** - B5 represents more serious behavioural issues such as fighting, vaping and bullying or serious disrespect to the school community. However, at times the severity of these incidents may result in a higher-level sanction (B6). Teachers should e-mail the YL / AHT with a referral for a B5 incident. If pupils are not following instructions within inclusion there will be a 3-strike rule, where it will then be escalated to a B6.

**B6 - Fixed term exclusion** - A fixed term exclusion of between 1-10 days will apply for incidents such as serious assault, discrimination, bullying after interventions and swearing at, or filming / photographing staff.

### **B7 - Permanent exclusion**

A permanent exclusion will apply for the most serious incidents such as assault on a member of staff, possession / distributing illegal substances and carrying a knife with intent.

### **Provision**

We recognise that some of our pupils require additional provision in order to help them to access learning. It is hoped that with a clear system of identification, the support is in place for these pupils meaning that classroom teachers will not have to deal with these behaviours. Whilst this provision is important it does not exclude these pupils from the normal behaviour consequences should these occur in the classroom situation.

### **Rewards**

The rewards system will use Class Charts as a recording and communication mechanism. All staff will have access to Class Charts and are therefore able to enter a reward (teggies). Pupils, parents and carers will be encouraged to download the Classcharts app (free) meaning that they will then receive a notification each time a reward is allocated.

### **Rewards (Teggies) can be earned in 3 different ways:**

#### **All day, every day**

Any member of staff (teacher or support) can award a Teggy if they feel a pupil has done something that deserves special recognition. This could be during a lesson, in the coffee shop, during enrichment, in an activity.... the list is endless.

#### **Brilliant Attendance**

If a pupil's attendance is over 95% at the end of each term, 20 Teggies will be awarded. Each term is treated separately meaning pupils will have 3 chances to get the attendance Teggies each year – meaning 60 Teggies in total.

#### **Amazing Behaviour**

At the end of each term, all pupils who have NOT had a single consequence point will be awarded 20 Teggies. Each term is treated separately meaning pupils will have 3 chances to get the Behaviour Teggies each year - another chance to achieve 60 Teggies.

|                |             |  |   |
|----------------|-------------|--|---|
| Platinum Level | 500 Teggies | Platinum level certificate and pin badge presented in a governors' reception | Platinum Level Rewards Menu - Amazon voucher, Odeon voucher for 2 people etc. |
| Gold Level     | 400 Teggies | Gold level certificate and pin badge presented in a school event             | Gold Level Rewards Menu - lunch table with 3 friends, stationary etc.         |
| Silver Level   | 250 Teggies | Silver level certificate and pin badge presented in a celebration assembly   | Silver Level Rewards Menu - 4 week queue jumper free meal etc.                |
| Bronze Level   | 100 Teggies | Bronze level certificate and pin badge presented in an assembly              | Bronze Level Rewards Menu - 1 week queue jumper stationary etc.               |

## Rewards Shop

In addition to the certificate/pin badges, pupils can access the rewards shop when they reach each of the four levels (see chart below). Whilst there is the facility in Classcharts for pupils to access an online rewards shop, in the first instance the following system is to be used. On receiving a certificate, pupils can choose to visit the rewards shop should they wish. The rewards shop will be open during breaktime in the Pupil Reception every Friday.

The pupil arrives at reception with his/her certificate and chooses one reward from the appropriate menu. Receptionist issues the reward, stamps and signs the back of the pupil's certificate. Rewards will not be available at any other time.

| Bronze Level   | Silver Level   | Gold Level   | Platinum Level             |
|--|--|--|----------------------------|
| 1 week queue jumper pass (has to be taken on consecutive days)                             | 2 week queue jumper pass (has to be taken on consecutive days)                             | Lunch table with 3 friends (reserved table, main course, dessert, drink) | Amazon Voucher (£10)       |
| 3 items of stationery  | Voucher for a meal (main course, dessert, drink)   | Stationery set/calculator  | Odeon Cinema voucher for 2 |
| Voucher for a hot drink and a cookie   | 6 items of stationery  | Non-uniform Friday for winner +3 friends                                 |                            |
| Y10 – 1 week pass for lunch outside (with one friend, has to be taken on consecutive days) | Y10 – 2 week pass for lunch outside (with one friend, has to be taken on consecutive days) |  |                            |
| Y11 – pass for the Prom (only pupils with the pass will be able to purchase a prom ticket) |  |  |                            |



## Parents' and Carers' Evenings

Keeping parents and carers fully informed about their children's progress is crucial. Parent and carer evenings are regularly scheduled for all year groups throughout the academic year. The dates for these events can be located in the school calendar on our website [www.bryntegschool.co.uk](http://www.bryntegschool.co.uk). To facilitate the booking of on-site appointments, we utilise the School Cloud system: <https://brynteg.schoolcloud.co.uk/>, allowing parents and carers to schedule on-site meetings. Letters are sent via [ClassCharts](#) and [InTouch Email](#) to parents and carers with parental responsibility,

guiding them to book appointments. Should parent carers have more extensive queries requiring additional time, staff will arrange a follow-up phone call or meeting with timings to suit both parties. In addition, the School Cloud video element will be used, should the school need to return to video parent-carer meetings.

## Year Leader Meetings

Year Leaders are available to see parent carers should concerns arise when situations have not been resolved. Onsite meetings or telephone calls need to be pre-arranged, due to teaching timetables and staffing commitments, it is not always possible for Year Leaders to meet with parents and carers ad-hoc.

## Admissions

Please read our Admissions Policy on our website: [www.bryntegschool.co.uk](http://www.bryntegschool.co.uk). If you are applying for a place this can be completed online by visiting the BCBC website. All other queries about admission to our school should be addressed to the BCBC Pupil Services team in the first instance.

Bridgend County Borough Council  
Email: [pupilservices@bridgend.gov.uk](mailto:pupilservices@bridgend.gov.uk)  
Telephone: 01656 642622

Address: Civic Offices, Angel Street, Bridgend, CF31 4WB.

### **Key Dates for Applications for Secondary School:**

The admissions timetable for pupils moving from junior/primary school (Year 6) to secondary school (Year 7) in September 2026

**Information to be updated by [BCBC](#) - Please check their website for information.**

Applications open: **Usually mid-October annually**

Deadline date for completed application forms: **Usually mid-January annually**

Notification to parents/carers of acceptance/refusal of places: **Usually start of March annually**

Closing date for parents/carers to submit appeals: **Usually end of March annually**

The details about school transfers can be found on the [BCBC website](#). When a place at Brynteg has been confirmed, we ask that you complete the [contact and consent form](#). This will help us to update our systems with all of the necessary information to enable us as a school to keep our records up-to-date.

For Mid Transfers, please contact Pupil Services directly. Transferring a child between schools can be quite disruptive. If a transfer request is not due to a house move, **parents/carers are strongly advised to talk to their child's teacher or headteacher**. They can help with many issues. The least disruptive time to transfer is at the beginning of the school year, but transfers should be thought about very carefully in all cases.

### **School Essentials Grant**

If you are the parent or guardian of a child in school, you may be eligible for a grant to help pay for essential school items. The official name of this grant is [School Essentials Grant](#). This is also known as the Pupil Development Grant, PDG access or Uniform grant.

Please visit the Bridgend County Borough Council website for up-to-date details on the grant amount, eligibility and to apply.

**Eligibility** - You are eligible if your child receives free school meals.

You may be eligible if you receive one of the following:

Income support,

Jobseeker's allowance (income based),

Employment and Support Allowance (income related),

Child Tax Credit, with a household income of £16,190 or less,

Pension Credit (guarantee),

Universal Credit with net household earnings of less than £7400,

Help under Immigration and Asylum Seekers Act 1999.

In some cases, you may need to receive one of these even if your child receives free school meals.

Check out other help available on the Bridgend County Borough website

### **Free School Meals Eligibility (FSM)**

If you live in Bridgend County Borough and receive any of the following benefits, you can claim free school meals for your school-aged child: To check your eligibility please visit the [Bridgend County Borough Website](#)

## **The New Curriculum Adoption Statement**

Brynteg School introduced the new [Curriculum for Wales](#) for year 7 pupils from September 2022. This is an exciting time for us as a school with the new curriculum model offering us the opportunity to provide all of our pupils with learning experiences which truly inspire, enthuse and prepare them well for life beyond our school.

The curriculum model has been designed after consultation with pupils, parents, carers and staff. The principle of 'co-construction' is a crucial part of our work as we seek to develop learning experiences which are relevant to all pupils and address their needs, as well as ensuring that our curriculum model reflects the needs of our wider community. Whilst all key stakeholders have been involved in the process, our pupils have been the driving force behind our new curriculum model with the main features all reflecting the feedback received from our pupil voice sessions.

Identifying experiences, knowledge and skills within and across clusters using the statements of What Matters, Descriptions of Learning and the Principles of Progression as a guiding framework, has helped to create the learning opportunities within our new curriculum model. This work has been driven by the commitment to ensuring pupils make progress towards the four purposes, whilst at the same time being underpinned by the core values of the school and cross-curricular skills.

Central to our plans has been the commitment to ensure that all our pupils make progress and that this is captured in a way that complements and not hinders the learning process. Formative assessment forms an important part of our model where individual pupils will be provided with continuous support throughout their learning journey. As pupils develop their learning portfolio, this will allow learning to be identified, captured and reflected on, giving more summative feedback. Our plans also include ensuring that assessment information informs us of group progress in order to ensure that we can reflect on our practice.

The school has a detailed framework for self-evaluation which involves all stakeholders, and which addresses all aspects of our provision. Our new curriculum model will be part of this process from the outset and opportunities will be taken to reflect and refine as this develops over time. In this way we can ensure that the learning experiences for our pupils will always be relevant, inspiring and provide challenges for all.

Learning within the New Curriculum is divided into six areas or clusters as we call them at Brynteg;

1. Expressive Arts,
2. Health and Wellbeing,
3. Languages, Literacy and Communication,
4. Humanities,
5. Maths and Computer Science and
6. Science and Technology.



Our six cluster areas are led by our Cluster Leaders, who have worked incredibly hard this year to design a curriculum that will provide pupils with the opportunity to be creative and ambitious, while having lots and lots of fun!

What subjects will pupils study within each cluster? There will be the study of a variety of subjects, for example in Expressive Arts you will study Art, Drama, Music and Textiles, and in Humanities you will study History, Geography and Religious Studies. You will learn to use skills you have developed in one cluster area in another, and there will be plenty of opportunities for you to showcase your work to your parents, carers and the rest of the school.

To give you a taste of what to expect, here are just some of the exciting things pupils will be doing throughout your first year:

- Pen portraits, raps and drama sketches about yourself.
- Designing and producing a new school meal to be served in the canteen.
- Visiting the Big Pit Mining Museum as part of a study into mining and child labour.
- Studying forensics in Science, focusing particularly on fingerprints and facial recognition.
- Designing an iPad or iPhone docking station for your bedroom in DT.
- Studying Africa, focusing particularly on 'The Lion King' and designing costumes, masks and artwork to be used in a show.
- Studying hospitality; preparing, cooking and serving food for a school event.
- Participating in a variety of sports and learning about sport in countries around the world.

## Transport

### Walking



Many pupils walk to school. There are two entrances on Ewenny Road - 1 opposite Heronsbridge and the other the main bus bay entrance. The other entrance is on Heol Gam. **Access after 9am will only be through the main (bus-bay entrance).** Our school entrances are located on very busy traffic routes. Pupils are constantly reminded of the need for great care in crossing the roads and are particularly encouraged to crossroads using the crossing patrol.

### Bus



Buses are either provided by the local authority or organised privately. There have been changes to eligibility of transport provision (September 2025), Please contact [BCBC](#) directly with regards to eligibility.

|                                 |        |        |
|---------------------------------|--------|--------|
| Coity Road (chip shop bus stop) | 7.50am | 4.05pm |
| Coity Road (hospital bus stop)  | 7.53am | 4.02pm |
| Litchard Cross Lower            | 7.55am | 4pm    |
| Parc Dderwen                    | 8am    | 3.56pm |
| Term y Castell (entrance)       | 8.05am | 3.51pm |
| Church Acre                     | 8.08am | 3.48pm |
| Hunters Lodge                   | 8.10am | 3.46pm |
| Channel View                    | 8.13am | 3.43pm |
| Brackla Way                     | 8.15am | 3.40pm |
| Brynteg School                  | 8.35am | 3.30pm |

**Peyton Travel** provides a paid service between Litchard, Wildmill, Brackla and Brynteg. This service is **not organised** by the school. Please contact Peyton Travel directly for more information on this service and the cost.

<https://www.peytontravel.co.uk/>  
01656 661221 / 07788832357

### Cycle



Cycling to school is increasingly popular. There are two bike sheds - one off the Heol Gam Entrance and the other Ewenny Road (Heronsbridge) entrance. The shelters are not locked during the day and therefore it is advisable to bring a bike lock to school as well. Helmets must be worn and can be stored in lockers. Bicycles will not be permitted on site should a helmet not be worn.

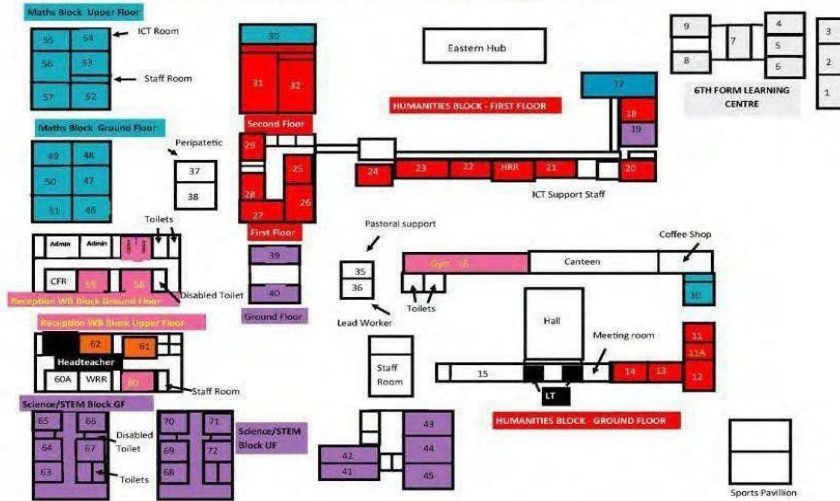
E-scooters are **not permitted** on school premises or used for commuting by students, this is in line with our school policy and [U.K law](#).

**Car**

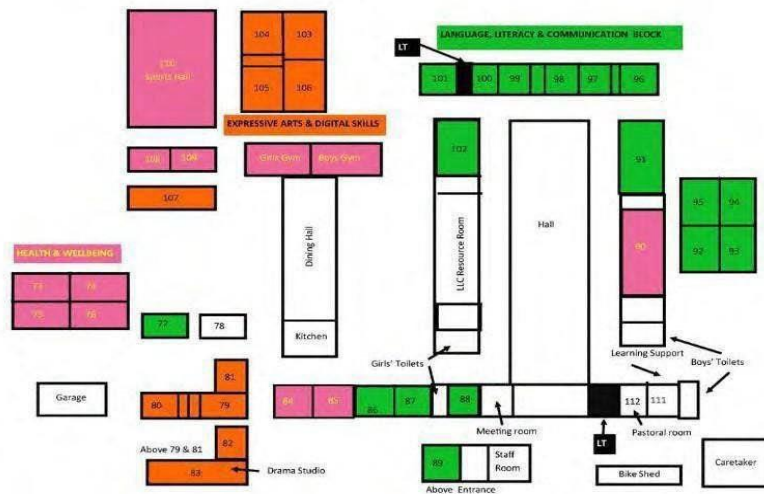


If pupils are to be dropped off by car, this must be done in a safe area outside the school site. Parents and carers are advised not to stop where oncoming traffic can be obscured. It is also advised that cars **do not obstruct or turn in the school entrances** or block local residents' driveways near to the school when dropping off or collecting their children. There is no vehicular access to the site between 8.35 – 9:05am and 3.00-3.30pm for health and safety reasons.

**School Map  
Humanities, Science Technology, Maths:**



**School Map  
Humanities, Science Technology, Maths:**



**Bird's-eye view of Ysgol Brynteg School**



## **Religious Education**

Religious Education teaching is based on the Bridgend County Agreed Syllabus. The underlying approach is essentially Christian, but the teaching has regard for the multi-faith nature of the school's pupils and seeks at all times to achieve an appropriate balance in the study of religion. Students gain an understanding of the main beliefs in Hinduism, Judaism, Sikhism and Islam. Religious Education is compulsory at both Key Stage 3 and 4. At Key Stage 4, Religious Studies is available as an option subject.

## **Enrichment**

At Brynteg, we hold enrichment sessions for the whole school every second Wednesday afternoon. There is a rotation of activities on offer for our pupils to enjoy. Activities which have run in the past include Go Kart building, fire cadets, hair and beauty, darts, golf, crafting, music for beginners, Mandarin, Swedish, netball, dance, script writing, film, fun science, running, walking, climbing, cake decorating, Indian cookery and much, much more.



## **Extra-Curricular Activities**

We are very pleased to offer extra-curricular activities at Ysgol Brynteg School. These are under the supervision of teachers and may take place at lunchtime or at the end of the school day. Should any of these activities be cancelled due to staffing or inclement weather we will try our best to inform parents/carers in good time via ClassCharts announcements.

There is a wide range of activities that our pupils can take part in on a weekly basis. Some of these take place at lunchtime, others take place at the end of the school day. Here is just a small sample:

**Film club, Theatreclub, PRIDE club, IT club, Welsh club, Football, Sporting clubs (varied) Orchestra, Wind and Brass band, Drama club**



Details of all of our clubs are shared by form tutors, in assemblies, in our pupil announcement board outside pupil reception, on our social media platforms and digital displays around the school. You can also visit our Extra Curricular page on our website.

## **Duke of Edinburgh**

The Duke of Edinburgh Award is all about setting personal challenges and pushing personal boundaries. Through the Duke of Edinburgh programme young people have fun, make friends, improve their self-esteem and build their confidence. The Duke of Edinburgh Coordinator in our school is Mr V Brown. Please contact Mr Brown if you have any queries regarding the Bronze, Silver or Gold Awards and to obtain your completed Duke of Edinburgh certificates:

[Vincent.Brown@bryntegschool.bridgend.cymru](mailto:Vincent.Brown@bryntegschool.bridgend.cymru)



## **Learning Support**

*The school's policy on special education needs is to provide support and help for all pupils who need to overcome educational difficulties. These difficulties embrace many aspects including difficulties accessing the curriculum (for example with literacy and numeracy), physical, social, psychological, emotional and behavioural difficulties. Special arrangements for meeting the needs of such pupils include our Dyfodol provision, The Base provision and access to Curriculum Support. The ALN Department provides support teaching in some subjects, including numeracy and literacy. Pupils with statements of Special Educational Needs are fully included in school life and the curriculum.*

*Statements are reviewed annually. All pupils are encouraged to take an active part in school life, to experience the widest possible curriculum opportunities and supported to feel safe and secure within the school community. For more information visit our website.*

## **Dyfodol**

*Our KS3 & KS4 Dyfodol provision offers pupils full-time access to secondary learning and teaching experiences, using the many outstanding features from the primary education model. Pupils in the KS3 Dyfodol provision are taught for the majority of the time as a discrete group but enjoy access to many areas of specialist provision which are important features of our secondary curriculum (e.g. Science and Technology practical lessons, Health and Wellbeing lessons, etc).*

*Whilst initially, pupils will access this provision on a full-time basis, it is very much envisaged that pupils will have the opportunity to increasingly access learning outside this provision, reflecting their strengths and Interests.*

*Pupils in our KS4 provision are offered an exciting curriculum tailored to their needs. They are taught English, Skills, and Prince's Trust within the provision in addition to accessing Science, Maths, and a chosen GCSE subject. Pupils are also given the opportunity to take part in many activities with external providers such as the TACKLE Project run by Osprey's in the Community and the John Muir Award. For more information on our Dyfodol provision, please visit our [website](#).*



## **The BASE Provision**

*The BASE provision caters for a small group of learners, providing a bespoke package of sessions that focus on developing self-esteem, confidence and skills. The aim is to improve learner attendance and engagement in school. The BASE also provides a safe space for learners to 'check in' prior to school and during break and lunch time. Staff who work in the BASE build excellent relationships with the learners and help them engage with teachers and all aspects of school life.*

## **Curriculum Support**

*Our Curriculum Support provision is accessed by pupils who require additional literacy, numeracy, 'catch-up' or wellbeing support in order to help them reach their full potential. The team consists of 5 Learning Support Officers, who run small groups and 1:1 interventions, including Forest Schools, ELSA and Thrive, and 2 Learning Support Assistants who support pupils in classes across the curriculum.*

### **The Team:**

**Mrs. S McNally** - Learning Support Officer [sharon.mcNally@bryntegschool.bridgend.cymru](mailto:sharon.mcNally@bryntegschool.bridgend.cymru)

**Mrs. A Sharma** - Learning Support Officer [amita.sharma@bryntegschool.bridgend.cymru](mailto:amita.sharma@bryntegschool.bridgend.cymru)

**Miss. B Hammond** - Learning Support Officer [bethany.hammond@bryntegschool.bridgend.cymru](mailto:bethany.hammond@bryntegschool.bridgend.cymru)

**Miss. L Borge** - Learning Support Assistant [lily.borge@bryntegschool.bridgend.cymru](mailto:lily.borge@bryntegschool.bridgend.cymru)



### **Pupil Voice**

*Pupil voice is an important aspect of school life at Ysgol Brynteg School. We actively promote the engagement of our students in whole school decision-making processes. Encouraging their contribution to the school's enhancement is vital, and we value their input in self-evaluation, planning, decision-making and co-construction of policy implementation. Aligned with our school values of R.I.C.K (Respect, Independence, Community, and Kindness), we ensure that every child has the opportunity to participate and make choices. Believing that involving pupils is crucial for their personal and social development, fostering teamwork and valuable skills, their active engagement influences decision-making for the benefit of the school. As staff, we recognise the importance of listening to our pupils and their experiences. Our commitment to inclusivity and respect for pupil feedback contributes to creating an empowering school environment where pupils feel they can make a positive impact upon their school community.*

## Equal Opportunities

Our school is dedicated to fostering an environment that rejects any form of discrimination against both pupils and staff. This commitment is firmly rooted in our approach to the curriculum and all facets of school life. We oppose discrimination based on gender, disability, race, sexual orientation, religion, ethnicity, or culture.

We believe that addressing these issues through open discussions is essential for creating an inclusive and respectful community. For more detailed information on our commitment to equal opportunities, please refer to the School's Equal Opportunities Policy. This policy provides comprehensive insights into our strategies, guidelines, and procedures aimed at ensuring equality and fairness for all members of our school community.

## **Careers Wales at Brynteg School**

Ysgol Brynteg School has forged a strong relationship with Careers Wales. Pupils are able to access the support from [Christine Hopes](#) or [Stephanie Mills](#) a Careers Advisor from Careers Wales. Advice and guidance can be provided in relation to: Year 9 option choices, year 11 choices about further full-time study, jobs or apprenticeships, sixth form choices about going to university, getting a job or support with deciding on the next step in education or employment. [www.careerswales.com](http://www.careerswales.com) can provide a wealth of information to our pupils in all key stages, to assist with making these important career pathway choices.

## [Brynteg School /Careers Wales](#)

## **Examination Information**

For any Examination enquiries or advice please contact **Mrs K Joseph**  
[katie.joseph@bryntegschool.bridgend.cymru](mailto:katie.joseph@bryntegschool.bridgend.cymru)

**For information on examinations please visit our website:**  
[www.bryntegschool.co.uk/learning/examination-information](http://www.bryntegschool.co.uk/learning/examination-information)

## **Examinations**

For pupils due to sit examinations, it is vital that they make themselves aware of the protocols in place with examinations.



Arrive on time 8:40 am for morning exams  
Arrive on time for 12:40 pm for afternoon exam  
You must not arrive late for your exam



Unwell? Parents/Carers must report your absence before 8:30am



Clear water bottles allowed



Bring a clear pencil case and appropriate equipment for the exam



Good behaviour expected



No head/earphones/AirPods or watches



Know your exam number and remember, you cannot leave the exam venue early



No mobile phones or devices



Wear full uniform - NO coats, hoodies, hats or winter scarves during an exam



Arrange transport home, if exam finishes after the school day

### **Access Arrangements**

Access Arrangements are pre-examination adjustments for candidates based on evidence of need and normal way of working. Access Arrangements fall into two distinct categories: some arrangements are delegated to centres, others require prior JCQ awarding body approval.

Access Arrangements allow candidates/learners with special educational needs, disabilities or temporary injuries to access the assessment without changing the demands of the assessment. For example, readers, scribes and Braille question papers. In this way Awarding Bodies will comply with the duty of the Equality Act 2010 to make 'reasonable adjustment'.

### **Special Consideration**

Special Consideration is a post examination adjustment to a candidate's mark or grade to reflect temporary injury, illness or other indisposition at the time of the examination/assessment.

Marking reviews and access to examination scripts

ALL REQUESTS FOR MARKING REVIEWS AND/OR PAPERS MUST BE MADE THROUGH THE SCHOOL

The dates and prices in the following information are based on last year and are, therefore, only approximate. Actual deadline dates and costs can be obtained on results day.

### **G.C.S.E Level**

All requests for a review of marking should be made to the examinations officer. Services available: Service 1 - Clerical check only. Service 2 - review of marking of all externally marked components. No report issued. Costs vary according to the Examination Board but are around £20 for clerical checking and £40 for service 2.

### **Access to Examination Scripts**

- You may request a scanned copy of your exam paper
- The school may request copies of scripts for its own educational use e.g for assisting future candidates
- Please note - If the school wishes to use your scripts for teaching purposes, then your permission will be asked for prior to its use.

\*\* Please note that as a result of a review of marking your marks/ grades can go down, up, or stay the same.

(All costs are approximate and TBC)

### **G.C.E 'A' Level, AS Level**

The dates and prices in the following information are based on last year and are, therefore, only approximate. Actual deadline dates and costs can be obtained on results day. Review of Marking of Examination Papers

- You may request Priority electronic to help you decide whether to request a review of marking. Photocopies will be received at school usually by the start of September.
- Services available: - Service 1: Clerical check only. Service 2: Review of marking of all externally marked components. No report issued.

Costs vary according to Examination Board

- All requests for a review of marking must be received by a date specific deadline (usually around 25th September)

### **Access to Examination Scripts**

- You may request a scanned copy of your scripts up to the deadline date.
  - The school may request exam scripts for its own educational use e.g. for assisting future candidates.
  - If the school wishes to use your scripts for teaching purposes, then your permission will be asked for prior to its use.
- \*\* Please note that as a result of a review of marking your marks/ grades can go down, up, or stay the same. (All costs are approximate and TBC)

Visit our website for support and guidance on exam tips and wellbeing signposting.

[www.bryntegschool.co.uk](http://www.bryntegschool.co.uk)

### **General exam stress-busting tips**

- Believe in yourself and try not to worry excessively.
- Take steps to overcome problems. Talk to your teachers or ask your classmates if you have a question about the exam.
- Don't keep things bottled up. Confiding in someone is a great way to alleviate stress and worry.
- Keep things in perspective. Interrupt negative thoughts with positive ones and actively challenge your irrational thoughts.
- Start Revision as early as possible regular revision in chunks will enable you to feel more prepared for the exam which should help to reduce exam stress
- Try to maintain a healthy lifestyle. Tiredness increases anxiety. Resilience is helped by:
  - exercise
  - positive thoughts
  - healthy diet
  - regular and adequate sleep
- Know when your exams are, the date and the time, make sure you have made a copy of your personalised exam timetable. Add this information to the family calendar. Put reminders in your phone for the evening before so you can organise everything you need.
- Get yourself into exam mode. Practise on past exams. Go on to the Awarding Bodies website and look for examiner reports and mark schemes from previous papers.
- Avoid bad things. Give coffee and other stimulants a miss. Avoid other people or things that may disturb your self-confidence, focus and level of relaxation.
- General exam stress-busting tips
- Believe in yourself and try not to worry excessively.
- Take steps to overcome problems. Talk to your teachers or ask your classmates if you have a question about the exam.
- Don't keep things bottled up. Confiding in someone is a great way to alleviate stress and worry.
- Keep things in perspective. Interrupt negative thoughts with positive ones and actively challenge your irrational thoughts.
- Start Revision as early as possible regular revision in chunks will enable you to feel more prepared for the exam which should help to reduce exam stress
- Try to maintain a healthy lifestyle. Tiredness increases anxiety. Resilience is helped by:
  - exercise
  - positive thoughts
  - healthy diet
  - regular and adequate sleep
- Know when your exams are, the date and the time, make sure you have made a copy of your personalised exam timetable. Add this information to the family calendar. Put reminders in your phone for the evening before so you can organise everything you need.
- Get yourself into exam mode. Practise on past exams. Go on to the Awarding Bodies website and look for examiner reports and mark schemes from previous papers.
- Avoid bad things. Give coffee and other stimulants a miss. Avoid other people or things that may disturb your self-confidence, focus and level of relaxation.

### **Examination Results**

If you sat examinations in November, you would have the results by mid January 2025. These results will be emailed to your Hwb school email address.

### **Examination Certificates**

Pupils are asked to collect examination certificates as soon as they have been issued. Every effort is made to contact the candidate to inform them to collect their certificates. A designated individual can collect certificates on the candidate's behalf, if they have written permission to do so. Due to GDPR regulations certificates are **destroyed after one year of issue**. Candidates will then need to communicate with the examinations board directly. For information on how to apply for a replacement exam certificate, please visit the [Gov.uk](https://www.gov.uk) website.

### **Option Choices Year 9**

During the Spring Term pupils in [Year 9 choose options](#) which follow their most appropriate Learning Pathway for Key Stage 4. Students are guided through this important process and will be provided with detailed subject information on courses at Ysgol Brynteg School. Parents and pupils will have the opportunity to discuss the subject choices on offer.

## Option Choices Sixth Form

Ysgol Brynteg School annually holds a Sixth Form Options Evening. The evening is organised to assist Year 11 pupils with their post-16 education pathway:



**DEADLINE TO APPLY IS FRIDAY 16<sup>TH</sup> JANUARY 2026 - 4PM  
DON'T DELAY, SIGN UP TODAY!**

Applications are open for September 2026.  
Download our Sixth Form Options Booklet from our website.  
[www.bryntegschool.co.uk](http://www.bryntegschool.co.uk)

## Sixth Form Course descriptions for 2026-2027

**Subject to change – visit our website for current information.**

If you would like more information about attending Brynteg Sixth Form, please email the Sixth Form team.



Mr A Harris  
Sixth Form Leader



Mrs E Reardon  
Assistant Sixth Form Leader



Ms J Clarke  
Sixth Form Wellbeing Officer

Team:

**Mr Harris** - Head of Sixth Form

[alan.harris@bryntegschool.bridgend.cymru](mailto:alan.harris@bryntegschool.bridgend.cymru)

**Mrs Reardon** - Assistant Head of Sixth Form

[elizabeth.reardon@bryntegschool.bridgend.cymru](mailto:elizabeth.reardon@bryntegschool.bridgend.cymru)

**Ms J Clarke** - Sixth Form Pupil Wellbeing Officer

[joanne.clarke@bryntegschool.bridgend.cymru](mailto:joanne.clarke@bryntegschool.bridgend.cymru)

## Message from Mr Harris:

We have a fantastic support network within the 6th Form including Mrs Reardon (Assistant Head of 6th Form) and a team of experienced and enthusiastic Form Tutors.

I am particularly proud of our 6th Form and the students that we have had the pleasure of watching develop over the years. Hopefully, the balance between academic progress and creating a positive community environment within the 6th Form has allowed us to create many positive memories for our students. The 6th Form are treated as young adults as they are given responsibility and control of their learning, however they also benefit from the School structure where support, guidance and stability are also available. We pride ourselves on treating every 6th Form student as an individual, often having personalised timetables and varied positive targets for each student.

We strive to provide an enjoyable and productive experience in the 6th Form, where students have the opportunity to excel academically whilst also enjoying the personal and social aspects of a vibrant 6th Form. To witness our students, develop into well-rounded young adults with the option of progression to university is always a privilege, one that I hope continues for many years to come.

Mr Harris.

Head of Sixth Form - [alan.harris@bryntegschool.bridgend.cymru](mailto:alan.harris@bryntegschool.bridgend.cymru)





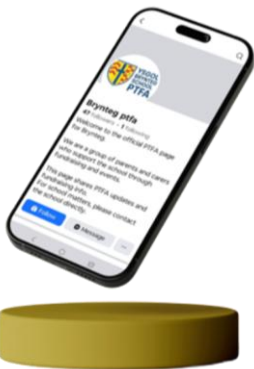
**YSGOL  
BRYNTEG  
SCHOOL  
PTFA**

 [bryntegschoolptfa@gmail.com](mailto:bryntegschoolptfa@gmail.com)



### ***Brynteg School Parent Teacher & Friends Association (PTFA)***

*The purpose of the PTFA is to strengthen the connection between families, staff, and the wider community, while supporting the school through fundraising, events, and volunteering. We welcome more members of the school community to take part. We regularly meet to discuss ways to improve the school for the better.*



*If you have any questions, please feel free to contact the [PTFA](#).  
We look forward to hearing from you.*

*Click here for the [PTFA Facebook](#) page.*

*Click here for the [PTFA Webpage](#).*



***If you would like to  
support the school  
in any other way,  
please take a look  
at our website or  
contact us.  
Thank you.***

**BRYNTEG SCHOOL**   
**WWW.BRYNTEGSCHOOL.CO.UK**