

**NSPCC**

Est.  
1841

YORK  
ST JOHN  
UNIVERSITY

# IT'S NOT LOVE

INFORMATION PACK



# What is 'It's not love?'





**It's Not Love** is a Theatre in Education play that follows 4 characters experiencing inter personal domestic violence, in familial, friendship and in intimate partner relationships.

The 25-minute play, 25-minute question and answer session and accompanying 50-60 minute facilitated drama workshop, allows young people aged 11-14, to explore the impact of the decisions that the characters make and investigate potential allies and intervention moments, while also exploring the questions surrounding what is a healthy and unhealthy relationship.

Commissioned by the NSPCC as part of Together for Childhood's "Give It to Get It" Healthy Relationships Campaign and created by York St John University theatre department, **It's Not Love** is a theatre in education (T.I.E) play that seeks to prevent harmful sexual behaviours and coercive control that may lead to adult domestic violence and abuse in intimate partner relationships.



We have been working with our colleagues in the NSPCC since 2015 and have built a strong partnership and good track record of creatively responding to NSPCC campaigns developing a collaborative approach to delivering effective, exciting and high-quality work which resonates with the young people.”

**Jules Dorey Richmond,**  
Co-Director and Senior Lecturer  
in Theatre and Performance at YSJ.



# Creative team and cast

The play was created through intensive research informed by real life situations and experiences.



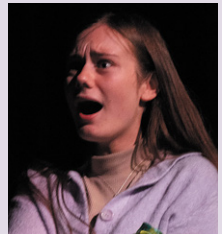
The directors, Rachel Conlon and Jules Dorey Richmond, both senior lecturers at York St John University and experienced theatre practitioners, working collaboratively with the NSPCC, young people and YSJ theatre alumni in the creation of **It's Not Love**.

The cast is made up of 4 professional actors all of whom have been trained in the delivery and facilitation of the play, Q&A, and the subsequent workshop.

“

It made me understand that with any boy I date, I can now see if I'm in an unhealthy relationship.”

Pupil from initial tour in Grimsby



“

I think it's really important to get it across to young people so that they are with the right people. People that make them feel happy, comfortable and safe.”

Caitlin Hickey, actor during the initial launch and character films.

# Safeguarding Professionals

The cast will also be accompanied on their visit by trained NSPCC representatives and support agency professionals. These individuals will work alongside your own school safeguarding and pastoral staff to act as a point of support and contact for any disclosures made by the young people and offer follow on guidance.

## Why Theatre in Education (T.I.E)?

Theatre offers a means to approaching challenging and often personal issues, giving young people an opportunity to observe a challenging or concerning situation. The accompanying workshops also allow participants to 'step into' the scenario to look at the possible outcomes for the characters, without any implications for themselves offering them a 'rehearsal for life' opportunity.





# What is the play about?

This interactive theatre performance is designed to explore issues associated with healthy and unhealthy relationships and the prevention of harmful behaviours that may lead to domestic abuse in young people and adult intimate relationships.

The play and workshop explore the worlds of four characters, looking at the choices they make and consequences of them. The piece is designed to be fully participatory, allowing young people to input into decisions that the characters make and then explore the impact of these.



# Aims of the project

The project aims to prevent peer on peer and domestic abuse through an effect awareness raising and behaviour change campaign targeting young people through a range of positive behaviour change techniques.

## Through this project we aim to:

- 1** Create opportunities to discuss a number of issues relating to; unhealthy behaviours, coercive control, sexual exploitation, domestic abuse, intergenerational family dynamics and aspirational thinking.
- 2** Create opportunities for discussion around these issues of concern.
- 3** Consider the people, organisations and services available to help young people keep safe and seek support.
- 4** Offer strategies for how to navigate away from potentially 'harmful' situations.
- 5** Offer contact details of local workers who can support young people if they do find themselves in difficult situations.
- 6** Act as a preventative measure to reduce potential risks to young people.

# Next steps?

**Once we have received your booking and confirmed the performance date, prior to the performance we will:**

- Facilitate a check-in telephone call and email in advance of the visit.
- Provide DBS certificates of the team through email in advance.
- Provide marketing literature about the play and a link to the online NSPCC digital resources.

## **Action required from you**

- Establish a lead contact - we will need their contact number and email address.
- Full venue address and postcode.
- Session start and finish time.
- Confirmation of year group and number of students.
- Parents/guardians must be informed of the project and consent forms issued and returned (if needed).

The performance of **It's Not Love** (running time approx 25 minutes) immediately followed by an interactive Q&A session (25 minutes).

A 50-60 minute facilitated drama workshop for up to 120 young people split into 4 groups – **if you require a longer workshop time, please let us know.**





# School personnel requirements

The play and workshop will require a safeguarding professional or pastoral lead in attendance who will provide support and advice throughout the session.

School staff and/or teachers should also be in attendance during the performance and workshops to support students. These individuals will be required to be actively involved in the event, offering support to the groups during the workshops and encouraging engagement in the tasks that are set by the Theatre in Education team.

Each session will last 2 hours – combining a 25-minute play, 25-minute question and answer session and accompanying 50-60 minute facilitated drama workshop.

We will require 30 minutes in the space to set up before the performance.

## Space/set

- Large school hall or drama studio – please avoid the setting up of lunchtime catering in the space while professionals are working.
- After the performance we will require a further 3 breakout spaces for workshops for up to 25/30 pupils per group. These can be large classrooms if you are happy for us to move tables and chairs to the side of the room, ideally this could be done before the event
- We will also require a parking space close to the performance area.

School lunch should also be provided for the performance team if possible.

The NSPCC logo is displayed in a bold, green, sans-serif font. It is positioned in the upper left corner of the page, set against a dark purple background that has a torn, paper-like edge. The rest of the page has a white, crumpled paper texture.

**NSPCC**

Est.  
**1841**

**YORK  
ST JOHN  
UNIVERSITY**

**To find out more,  
please email:**